

## **NICE SUGAR STUDY TREATMENT ALGORITHM**

The NICE-SUGAR STUDY blood glucose management algorithm (“Algorithm”) has been designed for use solely by medical practitioners treating patients enrolled in the NICE-SUGAR STUDY. It is not intended to be provided directly to patients or lay persons or for use outside of the NICE-SUGAR STUDY.

By using the Algorithm you acknowledge and agree that you have read these terms and conditions (“Terms”) and agree to be bound by and comply with them.

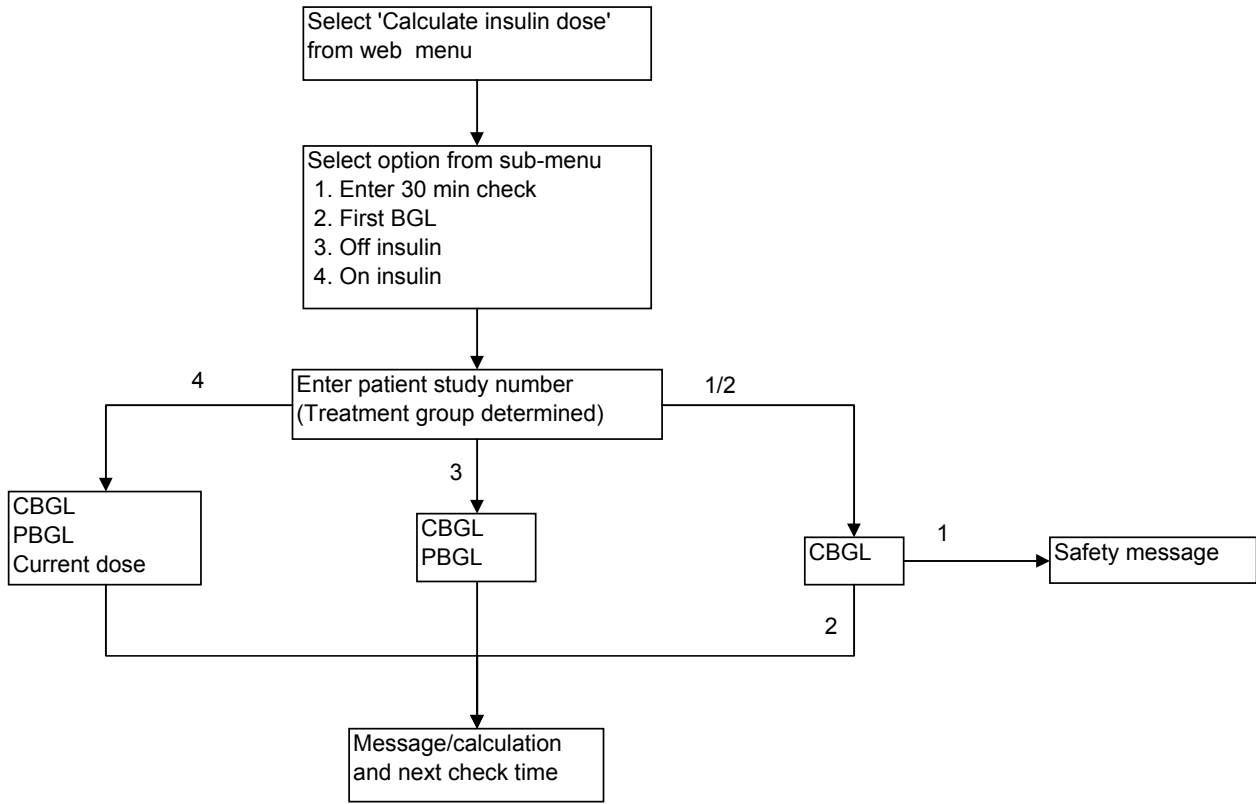
**SPECIFIC TREATMENT REGIMENS FOR PATIENTS REMAIN THE RESPONSIBILITY OF THE TREATING MEDICAL PRACTITIONER, WHO CAN MAKE A PROPER ASSESSMENT OF THE PATIENT. *NOTWITHSTANDING USE OF THIS ALGORITHM, CLINICAL JUDGMENT MUST PREVAIL AT ALL TIMES BEFORE INSULIN OR ANY OTHER TREATMENT IS ADMINISTERED OR ALTERED IN PATIENTS.***

**THE ALGORITHM AND THE RESULTS GENERATED BY ITS USE SHOULD NOT BE SEEN AS MEDICAL ADVICE CONCERNING PATIENTS.**

**THE GEORGE INSTITUTE FOR INTERNATIONAL HEALTH, ITS EMPLOYEES AND AGENTS, INCLUDING WITHOUT LIMITATION THE NICE SUGAR STUDY MANAGEMENT AND WRITING COMMITTEES (“THE INSTITUTE”) HEREBY DISCLAIM, TO THE MAXIMUM EXTENT PERMITTED BY LAW, ANY WARRANTIES, EITHER EXPRESS OR IMPLIED, WITH RESPECT TO SUCH INFORMATION AND THIS DOCUMENT, INCLUDING BUT NOT LIMITED TO WARRANTIES OF ACCURACY, COMPLETENESS, NON-INFRINGEMENT OR USEFULNESS OF THE ALGORITHM OR THE RESULTS GENERATED BY ITS USE OR ANY MISINTERPRETATION, INCORRECT OR INAPPROPRIATE CLINICAL DECISIONS TAKEN BASED ON KNOWLEDGE OR USE OF THE ALGORITHM OR THE RESULTS GENERATED BY ITS USE. THE INSTITUTE WILL NOT, TO THE MAXIMUM EXTENT PERMITTED BY LAW, BE LIABLE FOR ANY INJURY, LOSS OR DAMAGES (INCLUDING ANY CONSEQUENTIAL, INDIRECT, PUNITIVE, SPECIAL OR INCIDENTAL DAMAGES, LOSS OF REVENUE, LOSS OF PROFIT OR LOSS OF GOODWILL) WHETHER BASED IN CONTRACT, TORT, STATUTORY OR OTHER LAW ARISING OUT OF OR RELATING TO YOUR (OR ANY THIRD PARTY'S) KNOWLEDGE, USE OF OR INABILITY TO USE THE ALGORITHM OR USE OF OR RELIANCE UPON INFORMATION OBTAINED FROM IT, EVEN IF SUCH LOSS OUGHT REASONABLY TO HAVE BEEN IN THE CONTEMPLATION OF THE PARTIES WHEN USING THE ALGORITHM OR RELYING ON THE RESULTS GENERATED BY ITS USE.**

Any dispute arising out of or relating to these Terms or the Algorithm, whether based in contract, tort, statutory or other law, will be governed by the laws of New South Wales, Australia and the parties hereby irrevocably consent to the exclusive jurisdiction of the courts of New South Wales, Australia as the legal forum for any such dispute

**NICE insulin algorithm function**



**LOWER RANGE - first BGL in ICU (mmol/L)**

<b>Current BSL</b>	<b>Action code</b>	<b>Message</b>	<b>Next BGL check:</b>
<b>&lt;2.5</b>	<b>20</b>	<b>NO INSULIN</b> Ensure background nutrition or glucose intake <b>Give bolus of 20 ml 50% glucose, recheck BSL</b>	30 and 60 minutes
<b>2.5 - 3.4</b>	<b>21</b>	<b>NO INSULIN</b> Ensure background nutrition or glucose intake <b>Give bolus of 10 ml 50% glucose, recheck BSL</b>	30 and 60 minutes
<b>3.5 - 4.4</b>	<b>22</b>	<b>NO INSULIN</b>	1 hour
<b>4.5 - 6.0</b>	<b>22</b>	<b>NO INSULIN</b>	1 hour
<b>6.1 - 12.0</b>	<b>26</b>	<b>2 unit/hour</b>	1 hour
<b>&gt;12.0</b>	<b>28</b>	<b>4 unit/hour</b>	1 hour

**LOWER RANGE - first BGL in ICU (mg/dL)**

<b>Current BSL mg/dL</b>	<b>Action code</b>	<b>Message</b>	<b>Next BGL check:</b>
<b>&lt; 45</b>	<b>20</b>	<b>NO INSULIN</b> Ensure background nutrition or glucose intake <b>Give bolus of 20 ml 50% glucose, recheck BSL</b>	30 and 60 minutes
<b>45 - 62</b>	<b>21</b>	<b>NO INSULIN</b> Ensure background nutrition or glucose intake <b>Give bolus of 10 ml 50% glucose, recheck BSL</b>	30 and 60 minutes
<b>63 - 80</b>	<b>22</b>	<b>NO INSULIN</b>	1 hour
<b>81 - 108</b>	<b>22</b>	<b>NO INSULIN</b>	1 hour
<b>109 - 216</b>	<b>26</b>	<b>2 unit/hour</b>	1 hour
<b>&gt; 216</b>	<b>28</b>	<b>4 unit/hour</b>	1 hour

**HIGHER RANGE - first BGL in ICU (mmol/L)**

<b>Current BSL</b>	<b>Action code</b>	<b>Message</b>	<b>Next BGL check:</b>
<b>&lt;2.5</b>	<b>20</b>	<b>NO INSULIN</b> Ensure background nutrition or glucose intake <b>Give bolus of 20 ml 50% glucose, recheck BSL</b>	30 and 60 minutes
<b>2.5 - 3.4</b>	<b>21</b>	<b>NO INSULIN</b> Ensure background nutrition or glucose intake <b>Give bolus of 10 ml 50% glucose, recheck BSL</b>	30 and 60 minutes
<b>3.5 - 4.5</b>	<b>22</b>	<b>NO INSULIN</b>	1 hour
<b>4.6 - 10.0</b>	<b>22</b>	<b>NO INSULIN</b>	1 hour
<b>10.1 - 12.0</b>	<b>25</b>	<b>1 unit/hour</b>	1 hour
<b>12.1 - 15.0</b>	<b>26</b>	<b>2 unit/hour</b>	1 hour
<b>15.1 - 18.0</b>	<b>27</b>	<b>3 unit/hour</b>	1 hour
<b>&gt;18.0</b>	<b>28</b>	<b>4 unit/hour</b>	1 hour

**HIGHER RANGE - first BGL in ICU (mg/dL)**

<b>Current BSL mg/dL</b>	<b>Action code</b>	<b>Message</b>	<b>Next BGL check:</b>
<b>&lt; 45</b>	<b>20</b>	<b>NO INSULIN</b> Ensure background nutrition or glucose intake <b>Give bolus of 20 ml 50% glucose, recheck BSL</b>	30 and 60 minutes
<b>45 - 62</b>	<b>21</b>	<b>NO INSULIN</b> Ensure background nutrition or glucose intake <b>Give bolus of 10 ml 50% glucose, recheck BSL</b>	30 and 60 minutes
<b>63 - 81</b>	<b>22</b>	<b>NO INSULIN</b>	1 hour
<b>82 - 180</b>	<b>22</b>	<b>NO INSULIN</b>	1 hour
<b>181 - 216</b>	<b>25</b>	<b>1 unit/hour</b>	1 hour
<b>217 - 270</b>	<b>26</b>	<b>2 unit/hour</b>	1 hour
<b>271 - 324</b>	<b>27</b>	<b>3 unit/hour</b>	1 hour
<b>&gt; 324</b>	<b>28</b>	<b>4 unit/hour</b>	1 hour

**LOWER RANGE off insulin (mmol/L)**

Current BSL	Previous BGL	Change	Current minus previous	Action code	Message	Next BGL check:
<2.5				20	<b>NO INSULIN</b> Ensure background nutrition or glucose intake <b>Give bolus of 20 ml 50% glucose, recheck BSL</b>	30 and 60 minutes
2.5 - 3.4				21	<b>NO INSULIN</b> Ensure background nutrition or glucose intake <b>Give bolus of 10 ml 50% glucose, recheck BSL</b>	30 and 60 minutes
3.5 - 4.4		decreasing	<0	48	<b>NO INSULIN</b> Ensure background nutrition or glucose intake	30 and 60 minutes
3.5 - 4.4		stable or increasing	>=0	22	<b>NO INSULIN</b>	1 hour
4.5 - 6.0	<4.5 or >6.0			22	<b>NO INSULIN</b>	1 hour
4.5 - 6.0	4.5 - 6.0			23	<b>NO INSULIN</b>	2 hours (4 hours if last 2 BGLs 4.5 - 6.0)
6.1 - 12.0				49	<b>2 units per hour plus optional 1 unit stat dose</b>	1 hour
>12.0				50	<b>4 units per hour plus optional 1 - 2 units stat dose</b>	1 hour

LOWER RANGE off insulin (mg/dL)

Current BSL mg/dL	Previous BGL mg/dL	Change	Current minus previous	Action code	Message	Next BGL check:
<45				20	<b>NO INSULIN</b> Ensure background nutrition or glucose intake <b>Give bolus of 20 ml 50% glucose, recheck BSL</b>	30 and 60 minutes
45 - 62				21	<b>NO INSULIN</b> Ensure background nutrition or glucose intake <b>Give bolus of 10 ml 50% glucose, recheck BSL</b>	30 and 60 minutes
63 - 80		decreasing	<0	48	<b>NO INSULIN</b> Ensure background nutrition or glucose intake	30 and 60 minutes
63 - 80		stable or increasing	>=0	22	<b>NO INSULIN</b>	1 hour
81 - 108	<81 or > 108			22	<b>NO INSULIN</b>	1 hour
81 - 108	81 - 108			23	<b>NO INSULIN</b>	2 hours (4 hours if last 2 BGLs <b>81 - 108</b> )
109 - 216				49	<b>2 units per hour plus optional 1 unit stat dose</b>	1 hour
>216				50	<b>4 units per hour plus optional 1 - 2 units stat dose</b>	1 hour



HIGHER RANGE off insulin (mmol/L)

Current BSL	Previous BGL	Change	Current minus previous	Action code	Message	Next BGL check:
<2.5				20	<b>NO INSULIN</b> Ensure background nutrition or glucose intake <b>Give bolus of 20 ml 50% glucose, recheck BSL</b>	30 and 60 minutes
2.5 - 3.4				21	<b>NO INSULIN</b> Ensure background nutrition or glucose intake <b>Give bolus of 10 ml 50% glucose, recheck BSL</b>	30 and 60 minutes
3.5 - 4.5		decreasing	<0	21	<b>NO INSULIN</b> Ensure background nutrition or glucose intake <b>Give bolus of 10 ml 50% glucose, recheck BSL</b>	30 and 60 minutes
3.5 - 4.5		stable or increasing	>=0	22	<b>NO INSULIN</b>	1 hour
4.6 - 10.0	<4.6 or >10.0			22	<b>NO INSULIN</b>	1 hour
4.6 - 10.0	4.6 - 10.0			55	<b>NO INSULIN</b>	2 hours (4 hours if last 2 BGLs 4.6 - 10.0)
10.1 - 12.0				25	<b>1 unit/hour</b>	1 hour
12.1 - 15.0				26	<b>2 unit/hour</b>	1 hour
15.1 - 18.0				27	<b>3 unit/hour</b>	1 hour
>18.0				28	<b>4 unit/hour</b>	1 hour

HIGHER RANGE off insulin (mg/dL)

Current BSL mg/dL	Previous BGL mg/dL	Change	Current minus previous	Action code	Message	Next BGL check:
<45				20	<b>NO INSULIN</b> Ensure background nutrition or glucose intake <b>Give bolus of 20 ml 50% glucose, recheck BSL</b>	30 and 60 minutes
45 - 62				21	<b>NO INSULIN</b> Ensure background nutrition or glucose intake <b>Give bolus of 10 ml 50% glucose, recheck BSL</b>	30 and 60 minutes
63 - 81		decreasing	<0	21	<b>NO INSULIN</b> Ensure background nutrition or glucose intake <b>Give bolus of 10 ml 50% glucose, recheck BSL</b>	30 and 60 minutes
63 - 81		stable or increasing	>=0	22	<b>NO INSULIN</b>	1 hour
82 - 180	< 82 or > 180			22	<b>NO INSULIN</b>	1 hour
82 - 180	82 - 180			55	<b>NO INSULIN</b>	2 hours (4 hours if last 2 BGLs 82 - 180)
181 - 216				25	<b>1 unit/hour</b>	1 hour
217 - 270				26	<b>2 unit/hour</b>	1 hour
271 - 324				27	<b>3 unit/hour</b>	1 hour
324				28	<b>4 unit/hour</b>	1 hour

already on insulin (mmol/L)

Current BSL	Previous BSL	Change	Current minus previous	Current Insulin dose	Action code	Action	Next BGL check:
≤2.2					51	Calculation Message <b>STOP INSULIN FOR AT LEAST ONE HOUR</b> Ensure background nutrition or glucose intake Give bolus of 20 ml 50% glucose, recheck BSL. ASK DOCTOR TO REVIEW	30 and 60 minutes
2.3 - 3.5					52	Calculation Message <b>STOP INSULIN FOR AT LEAST ONE HOUR</b> Ensure background nutrition or glucose intake Give bolus of 10 ml 50% glucose, recheck BSL. ASK DOCTOR TO REVIEW	30 and 60 minutes
3.6 - 4.4		same or increase of 0.5 or less	between 0 and 0.5		17	Current Insulin dose (Units/hour)	1 hour
3.6 - 4.4		increase of 0.6 or more	>=0.6		17	Current Insulin dose (Units/hour)	1 hour
3.6 - 4.4		decrease of 1.4 or less	between - 0.1 and -1.4	<=1 units/hr	39	Current Insulin dose (Units/hour) * 0.5 unit/hour	30 and 60 minutes
3.6 - 4.4		decrease of 1.4 or less	between - 0.1 and -1.4	1.1 - 2.0 units/hr	39	Current Insulin dose (Units/hour) * 0.5 unit/hour	30 and 60 minutes
3.6 - 4.4		decrease of 1.4 or less	between - 0.1 and -1.4	>2.0 units/hr	39	Current Insulin dose (Units/hour) * 0.5 unit/hour	30 and 60 minutes
3.6 - 4.4		decrease of more than 1.4	< -1.4	<=1 units/hr	39	Current Insulin dose (Units/hour) * 0.5 unit/hour	30 and 60 minutes
3.6 - 4.4		decrease of more than 1.4	< -1.4	1.1 - 2.0 units/hr	39	Current Insulin dose (Units/hour) * 0.5 unit/hour	30 and 60 minutes
3.6 - 4.4		decrease of 1.4 - 3	between - 1.4 and -3	>2.0 units/hr	40	Current Insulin dose (Units/hour) * 0.5 unit/hour	ASK DOCTOR TO REVIEW
3.6 - 4.4		decrease of more than 3	< -3	>2.0 units/hr	56	Current Insulin dose (Units/hour) * 0.5 unit/hour	ASK DOCTOR TO REVIEW
4.5 - 6.0	4.5 - 6.0				11	Current dose (Units/hour) x (current BSL + previous BSL)	Check in 2 hours if BG and insulin infusion rate and calorie intake stable, check in one hour if BG or insulin infusion rate or calorie intake changing
4.5 - 6.0	<4.5				10	Current dose (Units/hour) x (current BSL + previous BSL)	1 hour
4.5 - 6.0	> 6.0	decrease of less than 2.0	between - 0.1 and -1.9		10	Current dose (Units/hour) x (current BSL + previous BSL)	1 hour
4.5 - 6.0	> 6.0	decrease of more than 1.9	< -1.9		57	Current dose (Units/hour) x (current BSL + previous BSL)	ASK DOCTOR TO REVIEW
6.1 - 7.9	≤ 8.0	decrease	<0		41	Current Insulin dose (Units/hour)	Plus optional 1 unit stat dose
6.1 - 8.0	≤ 8.0	same or increase	>=0		42	Current Insulin dose (Units/hour) + 1 unit/hour	Plus optional 1 unit stat dose
6.1 - 8.0	>8.0	decrease of less than 2	between - 0.1 and -1.9		41	Current Insulin dose (Units/hour)	Plus optional 1 unit stat dose
6.1 - 8.0	>8.0	decrease of 2 - 3.9	between - 2 and -3.9		33	Current dose (Units/hour) x (current BSL + previous BSL)	Or maintain current dose
6.1 - 8.0	>8.0	decrease of more than 3.9	< -3.9		57	Current dose (Units/hour) x (current BSL + previous BSL)	ASK DOCTOR TO REVIEW
8.1 - 10.0	<8.1				43	Current Insulin dose (Units/hour) + 2 units/hour	Plus 1 to 2 unit stat dose
8.1 - 10.0	8.1 - 10.0				44	Current Insulin dose (Units/hour) + 1 unit/hour	Plus 1 to 2 unit stat dose
8.1 - 10.0	>=10.1	decrease of 0.1 to 1.0	between - 0.1 and -1		44	Current Insulin dose (Units/hour) + 1 unit/hour	Plus 1 to 2 unit stat dose
8.1 - 10.0	>=10.1	decrease of 1.1 to 2.0	between - 1.1 and -2		42	Current Insulin dose (Units/hour) + 1 unit/hour	Plus optional 1 unit stat dose
8.1 - 10.0	>10.1	decrease of more than 2.0	< -2		33	Current dose (Units/hour) x (current BSL + previous BSL)	Or maintain current dose
>10.0	≤ 8.0				45	Current Insulin dose (Units/hour) + 2(current BSL + previous BSL) Units/hour	Plus 1 to 2 unit stat dose
>10.0	8.1 - 10.0				43	Current Insulin dose (Units/hour) + 2 units/hour	Plus 1 to 2 unit stat dose
>10.0	>10.0	increase	>0		45	Current Insulin dose (Units/hour) + 2(current BSL + previous BSL) Units/hour	Plus 1 to 2 unit stat dose
>10.0	>10.0	same or decrease of less than 2.0	between 0 and -1.9		44	Current Insulin dose (Units/hour) + 1 unit/hour	Plus 1 to 2 unit stat dose
>10.0	>10.0	decrease of 2.0 to 4.0	between -2.0 and -4.0		47	Current Insulin dose	Plus optional 1 to 2 unit stat dose
>10.0	>10.0	decrease of more than 4.0	< -4		33	Current dose (Units/hour) x (current BSL + previous BSL)	Or maintain current dose

± already on insulin (mg/dL)

Current BSL mg/dL	Previous BGL mg/dL	Change	Current minus previous	Current insulin dose	Action code	Calculation	Message	Next BGL check:
≤40					51		<b>STOP INSULIN FOR AT LEAST ONE HOUR</b> Ensure background nutrition or glucose intake Give bolus of 20 ml 50% glucose, recheck BSL. ASK DOCTOR TO REVIEW	30 and 60 minutes
41 - 63					52		<b>STOP INSULIN FOR AT LEAST ONE HOUR</b> Ensure background nutrition or glucose intake Give bolus of 10 ml 50% glucose, recheck BSL. ASK DOCTOR TO REVIEW	30 and 60 minutes
64 - 80		same or increase of 9 or less	between 0 and 9		17	Current Insulin dose (Units/hour)		1 hour
64 - 80		increase of 10 or more	>=10		17	Current Insulin dose (Units/hour)		1 hour
64 - 80		decrease of 25 or less	between -1 and -25	<=1 units/hr	39	Current Insulin dose (Units/hour) * 0.5 unit/hour		30 and 60 minutes
64 - 80		decrease of 25 or less	between -1 and -25	1.1 - 2.0 units/hr	39	Current Insulin dose (Units/hour) * 0.5 unit/hour		30 and 60 minutes
64 - 80		decrease of 25 or less	between -1 and -25	>2.0 units/hr	39	Current Insulin dose (Units/hour) * 0.5 unit/hour		30 and 60 minutes
64 - 80		decrease of more than 25	< -25	<=1 units/hr	39	Current Insulin dose (Units/hour) * 0.5 unit/hour		30 and 60 minutes
64 - 80		decrease of more than 25	< -25	1.1 - 2.0 units/hr	39	Current Insulin dose (Units/hour) * 0.5 unit/hour		30 and 60 minutes
64 - 80		decrease of 25 to 54	between -25 and -54	>2.0 units/hr	40	Current Insulin dose (Units/hour) * 0.5 unit/hour	<b>ASK DOCTOR TO REVIEW</b>	30 and 60 minutes
64 - 80		decrease of more than 54	< -54	>2.0 units/hr	56		<b>STOP INSULIN FOR AT LEAST ONE HOUR</b> Ensure background nutrition or glucose intake <b>ASK DOCTOR TO REVIEW</b>	30 and 60 minutes
81 - 108	81 - 108				11	Current dose (Units/hour) x (current BSL + previous BSL)	<b>Check in 2 hours if BG and insulin infusion rate and calorie intake stable, check in one hour if BG or insulin infusion rate or calorie intake changing</b>	1 hour or 2 hours
81 - 108	<81				10	Current dose (Units/hour) x (current BSL + previous BSL)		1 hour
81 - 108	> 108	decrease of less than 36	between -1 and -35		10	Current dose (Units/hour) x (current BSL + previous BSL)		1 hour
81 - 108	> 108	decrease of more than 35	< -35		57	Current dose (Units/hour) x (current BSL + previous BSL)	<b>ASK DOCTOR TO REVIEW</b>	30 and 60 minutes
109 - 143	≤ 144	decrease	<0		41	Current Insulin dose (Units/hour)	<b>Plus optional 1 unit stat dose</b>	1 hour
109 - 144	≤ 144	same or increase	>=0		42	Current Insulin dose (Units/hour) + 1 unit/hour	<b>Plus optional 1 unit stat dose</b>	1 hour
109 - 144	> 144	decrease of less than 36	between -1 and -35		41	Current Insulin dose (Units/hour)	<b>Plus optional 1 unit stat dose</b>	1 hour
109 - 144	> 144	decrease of 36 to 71	between -36 and -71		33	Current dose (Units/hour) x (current BSL + previous BSL)	<b>Or maintain current dose</b>	1 hour
109 - 144	> 144	decrease of more than 71	< -71		57	Current dose (Units/hour) x (current BSL + previous BSL)	<b>ASK DOCTOR TO REVIEW</b>	30 and 60 minutes
145 - 180	< 145				43	Current Insulin dose (Units/hour) + 2 units/hour	<b>Plus 1 to 2 unit stat dose</b>	1 hour
145 - 180	145 - 180				44	Current Insulin dose (Units/hour) + 1 unit/hour	<b>Plus 1 to 2 unit stat dose</b>	1 hour
145 - 180	≥ 181	decrease of 1 to 18	between -1 and -18		44	Current Insulin dose (Units/hour) + 1 unit/hour	<b>Plus 1 to 2 unit stat dose</b>	1 hour
145 - 180	≥ 181	decrease of 19 to 36	between -19 and -36		42	Current Insulin dose (Units/hour) + 1 unit/hour	<b>Plus optional 1 unit stat dose</b>	1 hour
145 - 180	> 181	decrease of more than 36	< -36		33	Current dose (Units/hour) x (current BSL + previous BSL)	<b>Or maintain current dose</b>	1 hour
> 180	≤ 144				45	Current Insulin dose (Units/hour) + 2(current BSL + previous BSL) Units/hour	<b>Plus 1 to 2 unit stat dose</b>	1 hour
> 180	147 - 180				43	Current Insulin dose (Units/hour) + 2 units/hour	<b>Plus 1 to 2 unit stat dose</b>	1 hour
> 180	> 180	increase	>0		45	Current Insulin dose (Units/hour) + 2(current BSL + previous BSL) Units/hour	<b>Plus 1 to 2 unit stat dose</b>	1 hour
> 180	> 180	same or decrease of less than 36	between 0 and -34		44	Current Insulin dose (Units/hour) + 1 unit/hour	<b>Plus 1 to 2 unit stat dose</b>	1 hour
> 180	> 180	decrease of 36 to 72	between -36 and -72		47	Current Insulin dose	<b>Plus optional 1 to 2 unit stat dose</b>	1 hour
> 180	> 180	decrease of more than 72	< -72		33	Current dose (Units/hour) x (current BSL + previous BSL)	<b>Or maintain current dose</b>	1 hour

HIGHER RANGE already on insulin (mmol/L)

Current BSL	Previous BSL	Change	Current minus previous	Current Insulin dose	Action code	Calculation	Message	Next BGL check:
≤2.2					1		<b>STOP INSULIN FOR AT LEAST ONE HOUR</b> Ensure background nutrition or glucose intake <b>Give bolus of 20 ml 50% glucose, recheck BSL</b>	30 and 60 minutes
2.3 - 4.0					2		<b>STOP INSULIN FOR AT LEAST ONE HOUR</b> Ensure background nutrition or glucose intake <b>Give bolus of 10 ml 50% glucose, recheck BSL</b>	30 and 60 minutes
4.1 - 6.0	≤6.0				3		<b>STOP INSULIN FOR AT LEAST ONE HOUR</b> Ensure background nutrition or glucose intake	1 hour
4.1 - 6.0	>6.0	decrease of more than 1.5	< -1.5		2		<b>STOP INSULIN FOR AT LEAST ONE HOUR</b> Ensure background nutrition or glucose intake <b>Give bolus of 10 ml 50% glucose, recheck BSL</b>	30 and 60 minutes
4.6 - 6.0	>6.0	decrease of 1.5 or less	between -0.1 and -1.5		3		<b>STOP INSULIN FOR AT LEAST ONE HOUR</b> Ensure background nutrition or glucose intake	1 hour
6.1-7.9				≤1.5 units/hr	29		<b>STOP INSULIN FOR AT LEAST ONE HOUR</b>	1 hour
6.1-7.9				>1.5 units/hr	53	Current Insulin dose (Units/hour) * 0.5 unit/hour		1 hour
8.0-10.0	< 8.0 or > 10.0				10	Current dose (Units/hour) x (current BSL + previous BSL)		1 hour
8.0-10.0	8.0 - 10.0				54	Current Insulin dose (Units/hour)	<b>Can check in 2 hours if BG and insulin infusion rate and calorie intake stable, check in one hour if BG or insulin infusion rate or calorie intake changing</b>	1 hour or 2 hours
10.1-12.0	≤ 12.0	decrease	<0		17	Current Insulin dose (Units/hour)		1 hour
10.1-12.0	≤ 12.0	same or increase	>=0		36	Current Insulin dose (Units/hour) + 1 unit/hour	<b>Plus 1 unit stat dose</b>	2 hours
10.1-12.0	>=12.1	decrease of 2 or less	between - 0.1 and -2		32	Current Insulin dose (Units/hour)	<b>Plus optional 1 unit stat dose</b>	2 hours
10.1-12.0	>12.1	decrease of more than 2	< -2		33	Current dose (Units/hour) x (current BSL + previous BSL)	<b>Or maintain current dose</b>	1 hour
12.1-14.0	<12.1				34	Current Insulin dose (Units/hour) + 2 units/hour	<b>Plus optional 1 to 2 unit stat dose</b>	1 hour
12.1-14.0	12.1 -14.0	same or increase	>=0		35	Current Insulin dose (Units/hour) + 1 unit/hour	<b>Plus optional 1 to 2 unit stat dose</b>	1 hours
12.1-13.9	12.2 -14.0	decrease of 1 or less	between - 0.1 and -1		35	Current Insulin dose (Units/hour) + 1 unit/hour	<b>Plus optional 1 to 2 unit stat dose</b>	1 hour
12.1-14.0	13.2 - 18.0	decrease of 1.1 to 3.9	between -1.1 and -3.9		37	Current Insulin dose (Units/hour)	<b>Plus optional 1 to 2 unit stat dose</b>	2 hours
12.1-14.0	16.1 - 18.0	decrease of 4 or more	<= -4		33	Current dose (Units/hour) x (current BSL + previous BSL)	<b>Or maintain current dose</b>	1 hour
12.1-14.0	>18.0				33	Current dose (Units/hour) x (current BSL + previous BSL)	<b>Or maintain current dose</b>	1 hour
>14.0	<12.1				38	Current Insulin dose (Units/hour) + 2(current BSL + previous BSL)	<b>Plus optional 1 to 2 unit stat dose</b>	1 hour
>14.0	12.1 -14.0				34	Current Insulin dose (Units/hour) + 2 units/hour	<b>Plus optional 1 to 2 unit stat dose</b>	1 hour
>14.0	>14.0	increase	>0		38	Current Insulin dose (Units/hour) + 2(current BSL + previous BSL)	<b>Plus optional 1 to 2 unit stat dose</b>	1 hour
>14.0	>14.0	same or decrease of less than 2.0	between 0 and -1.9		34	Current Insulin dose (Units/hour) + 2 units/hour	<b>Plus optional 1 to 2 unit stat dose</b>	1 hour
>14.0	>14.0	decrease of 2.0 to 4.0	between -2.0 and -4.0		18	Current Insulin dose		2 hours
>14.0	>14.0	decrease of more than 4.0	< -4		33	Current dose (Units/hour) x (current BSL + previous BSL)	<b>Or maintain current dose</b>	1 hour

HIGHER RANGE already on insulin (mg/dL)

Current BSL mg/dL	Previous BGL mg/dL	Change	Current minus previous	Current Insulin dose	Action code	Action	Next BGL check:	
						Calculation	Message	
≤ 40					1		<b>STOP INSULIN FOR AT LEAST ONE HOUR</b> Ensure background nutrition or glucose intake <b>Give bolus of 20 ml 50% glucose, recheck BSL</b>	30 and 60 minutes
41 - 72					2		<b>STOP INSULIN FOR AT LEAST ONE HOUR</b> Ensure background nutrition or glucose intake <b>Give bolus of 10 ml 50% glucose, recheck BSL</b>	30 and 60 minutes
73 - 108	≤ 108				3		<b>STOP INSULIN FOR AT LEAST ONE HOUR</b> Ensure background nutrition or glucose intake	1 hour
73 - 108	> 108	decrease of more than 27	< -27		2		<b>STOP INSULIN FOR AT LEAST ONE HOUR</b> Ensure background nutrition or glucose intake <b>Give bolus of 10 ml 50% glucose, recheck BSL</b>	30 and 60 minutes
73 - 108	> 108	decrease of 27 or less	between -1 and -27		3		<b>STOP INSULIN FOR AT LEAST ONE HOUR</b> Ensure background nutrition or glucose intake	1 hour
109 - 143				≤1.5 units/hr	29		<b>STOP INSULIN FOR AT LEAST ONE HOUR</b>	1 hour
109 - 143				>1.5 units/hr	53	Current Insulin dose (Units/hour) * 0.5 unit/hour		1 hour
144 - 180	< 144 or >180				10	Current dose (Units/hour) x (current BSL + previous BSL)		1 hour
144 - 180	144 - 180				54	Current Insulin dose (Units/hour)	<b>Can check in 2 hours if BG and insulin infusion rate and calorie intake stable, check in one hour if BG or insulin infusion rate or calorie intake changing</b>	1 hour or 2 hours
181 - 216	≤ 216	decrease	<0		17	Current Insulin dose (Units/hour)		1 hour
181 - 216	≤ 216	same or increase	>=0		36	Current Insulin dose (Units/hour) + 1 unit/hour	<b>Plus 1 unit stat dose</b>	2 hours
181 - 216	>= 217	decrease of 36 or less	between -1 and -36		32	Current Insulin dose (Units/hour)	<b>Plus optional 1 unit stat dose</b>	2 hours
181 - 216	> 217	decrease of more than 36	< -36		33	Current dose (Units/hour) x (current BSL + previous BSL)	<b>Or maintain current dose</b>	1 hour
217 - 252	< 218				34	Current Insulin dose (Units/hour) + 2 units/hour	<b>Plus optional 1 to 2 unit stat dose</b>	1 hour
217 - 252	217 - 252	same or increase	>=0		35	Current Insulin dose (Units/hour) + 1 unit/hour	<b>Plus optional 1 to 2 unit stat dose</b>	1 hours
217 - 251	219 - 252	decrease of 18 or less	between -1 and -18		35	Current Insulin dose (Units/hour) + 1 unit/hour	<b>Plus optional 1 to 2 unit stat dose</b>	1 hour
217 - 252	237 - 324	decrease of 19 to 70	between -19 and -70		37	Current Insulin dose (Units/hour)	<b>Plus optional 1 to 2 unit stat dose</b>	2 hours
217 - 252	289 - 324	decrease of 72 or more	<= -72		33	Current dose (Units/hour) x (current BSL + previous BSL)	<b>Or maintain current dose</b>	1 hour
217 - 252	> 324				33	Current dose (Units/hour) x (current BSL + previous BSL)	<b>Or maintain current dose</b>	1 hour
> 252	< 217				38	Current Insulin dose (Units/hour) + 2(current BSL + previous BSL)	<b>Plus optional 1 to 2 unit stat dose</b>	1 hour
> 252	217 - 252				34	Current Insulin dose (Units/hour) + 2 units/hour	<b>Plus optional 1 to 2 unit stat dose</b>	1 hour
> 252	> 252	increase	>0		38	Current Insulin dose (Units/hour) + 2(current BSL + previous BSL)	<b>Plus optional 1 to 2 unit stat dose</b>	1 hour
> 252	> 252	same or decrease of less than 36	between 0 and 35		34	Current Insulin dose (Units/hour) + 2 units/hour	<b>Plus optional 1 to 2 unit stat dose</b>	1 hour
> 252	> 252	decrease of 36 to 72	between -36 and -72		18	Current Insulin dose		2 hours
> 252	> 252	decrease of more than 72	< -72		33	Current dose (Units/hour) x (current BSL + previous BSL)	<b>Or maintain current dose</b>	1 hour

Table to be displayed on selection of 30 minute check option (mmol/L)

Current BSL	ACTION
<2.5	<p style="text-align: center;"><b>PLEASE USE THE RANGES BELOW TO DETERMINE TREATMENT</b></p> <p style="text-align: center;"><b>STOP INSULIN IF NOT ALREADY STOPPED</b></p> <p style="text-align: center;">Take blood sample for Lab or ABG machine to confirm blood glucose, give bolus of 20 ml 50% glucose as soon as sample taken</p> <p style="text-align: center;"><b>Recheck BSL in 30 minutes and enter result into the algorithm for patient off insulin.</b></p> <p style="text-align: center;"><b>ASK DOCTOR TO REVIEW</b></p>
2.5 - 3.4	<p style="text-align: center;"><b>STOP INSULIN IF NOT ALREADY STOPPED</b></p> <p style="text-align: center;">Ensure background nutrition or glucose intake Give bolus of 10 ml 50% glucose</p> <p style="text-align: center;"><b>Recheck BSL in 30 minutes and enter result into the algorithm for patient off insulin.</b></p> <p style="text-align: center;"><b>ASK DOCTOR TO REVIEW</b></p>
3.5 - 4.4	<p style="text-align: center;"><b>STOP INSULIN IF NOT ALREADY STOPPED</b></p> <p style="text-align: center;">Ensure background nutrition or glucose intake</p> <p style="text-align: center;"><b>Recheck BSL in 30 minutes and enter result into the algorithm for patient off insulin.</b></p>
>=4.5	<p style="text-align: center;"><b>CONTINUE INSULIN AT CURRENT RATE (CONTINUE WITH NO INSULIN IF INSULIN ALREADY OFF)</b></p> <p style="text-align: center;"><b>Recheck BSL in 30 minutes and enter result into the algorithm for patient on or off insulin.</b></p>

Table to be displayed on selection of 30 minute check option. (mg/dL)

Current BSL	ACTION
<45	<p style="text-align: center;"><b>PLEASE USE THE RANGES BELOW TO DETERMINE TREATMENT</b></p> <p style="text-align: center;"><b>STOP INSULIN IF NOT ALREADY STOPPED</b></p> <p style="text-align: center;">Take blood sample for Lab or ABG machine to confirm blood glucose, give bolus of 20 ml 50% glucose as soon as sample taken</p> <p style="text-align: center;"><b>Recheck BSL in 30 minutes and enter result into the algorithm for patient off insulin.</b></p> <p style="text-align: center;"><b>ASK DOCTOR TO REVIEW</b></p>
45 - 62	<p style="text-align: center;"><b>STOP INSULIN IF NOT ALREADY STOPPED</b></p> <p style="text-align: center;">Ensure background nutrition or glucose intake Give bolus of 10 ml 50% glucose</p> <p style="text-align: center;"><b>Recheck BSL in 30 minutes and enter result into the algorithm for patient off insulin.</b></p> <p style="text-align: center;"><b>ASK DOCTOR TO REVIEW</b></p>
63 - 80	<p style="text-align: center;"><b>STOP INSULIN IF NOT ALREADY STOPPED</b></p> <p style="text-align: center;">Ensure background nutrition or glucose intake</p> <p style="text-align: center;"><b>Recheck BSL in 30 minutes and enter result into the algorithm for patient off insulin.</b></p>
>=81	<p style="text-align: center;"><b>CONTINUE INSULIN AT CURRENT RATE (CONTINUE WITH NO INSULIN IF INSULIN ALREADY OFF)</b></p> <p style="text-align: center;"><b>Recheck BSL in 30 minutes and enter result into the algorithm for patient on or off insulin.</b></p>



Actions

Action code	Message_id	Calc_id	Calculation	Message	Recheck	Recheck qualifier
1	1	n/a		<b>STOP INSULIN FOR AT LEAST ONE HOUR</b> Ensure background nutrition or glucose intake Give bolus of 20 ml 50% glucose, recheck BSL	30 and 60 mins	
2	2	n/a		<b>STOP INSULIN FOR AT LEAST ONE HOUR</b> Ensure background nutrition or glucose intake Give bolus of 10 ml 50% glucose, recheck BSL	30 and 60 mins	
3	3	n/a		<b>STOP INSULIN FOR AT LEAST ONE HOUR</b> Ensure background nutrition or glucose intake	1 hour	
4	3	n/a		<b>STOP INSULIN FOR AT LEAST ONE HOUR</b> Ensure background nutrition or glucose intake	30 and 60 mins	
5	4	n/a		<b>REDUCE DOSE TO 0.5 UNIT/HOUR</b> Ensure background nutrition or glucose intake	30 and 60 mins	
6	5	n/a		<b>REDUCE DOSE TO 1.0 UNIT/HOUR</b> Ensure background nutrition or glucose intake	30 and 60 mins	
7	5	n/a		<b>REDUCE DOSE TO 1.0 UNIT/HOUR</b> Ensure background nutrition or glucose intake	1 hour	
8	6	n/a		<b>REDUCE DOSE TO 0.5 UNIT/HOUR</b> Ensure background nutrition or glucose intake Give bolus of 10ml 50% glucose, recheck BSL	30 and 60 mins	
9	7	n/a		<b>REDUCE DOSE TO 1.0 UNIT/HOUR</b> Ensure background nutrition or glucose intake Give bolus of 10ml 50% glucose, recheck BSL	30 and 60 mins	
10	n/a	1	Current dose (Units/hour) x (current BSL + previous BSL)		1 hour	
11	n/a	1	Current dose (Units/hour) x (current BSL + previous BSL)	<b>Check in 2 hours if BG and insulin infusion rate and calorie intake stable, check in one hour if BG or insulin infusion rate or calorie intake changing</b>	1 hour or 2 hours	recheck after 1 hour if you are concerned
12	n/a	2	Current dose (Units/hour) x (current BSL + previous BSL) + 0.5 unit/hour		1 hour	
13	n/a	2	Current dose (Units/hour) x (current BSL + previous BSL) + 0.5 unit/hour		2 hours	recheck after 1 hour if you are concerned
14	n/a	3	Current Insulin dose (Units/hour) + 2 units/hour		1 hour	
15	n/a	4	Current Insulin dose (Units/hour) + 1 unit/hour		1 hour	
16	n/a	4	Current Insulin dose (Units/hour) + 1 unit/hour		2 hours	recheck after 1 hour if you are concerned
17	n/a	5	Current Insulin dose (Units/hour)		1 hour	
17	34	5	Current Insulin dose (Units/hour)			
18	n/a	5	Current Insulin dose (Units/hour)		2 hours	recheck after 1 hour if you are concerned
19	n/a	6	Current Insulin dose (Units/hour) + 2(current BSL + previous BSL) Units/hour		1 hour	
20	8	n/a		<b>NO INSULIN</b> Ensure background nutrition or glucose intake Give bolus of 20 ml 50% glucose, recheck BSL	30 and 60 mins	
21	9	n/a		<b>NO INSULIN</b> Ensure background nutrition or glucose intake Give bolus of 10 ml 50% glucose, recheck BSL	30 and 60 mins	
22	10	n/a		<b>NO INSULIN</b>	1 hour	
23	10	n/a		<b>NO INSULIN</b>	2 hours	If last 2 BGLs in range 4.5 - 6.0 can recheck 4 hours after current reading was taken
24	10	n/a		<b>NO INSULIN</b>	4 hours	
25	11	n/a		<b>1 UNIT PER HOUR</b>	1 hour	
26	12	n/a		<b>2 UNIT PER HOUR</b>	1 hour	
27	13	n/a		<b>3 UNIT PER HOUR</b>	1 hour	
28	14	n/a		<b>4 UNIT PER HOUR</b>	1 hour	
29	15	n/a		<b>STOP INSULIN FOR AT LEAST ONE HOUR</b>	1 hour	
30	16	1	Current dose (Units/hour) x (current BSL + previous BSL)	<b>Ensure background nutrition or glucose intake</b>	1 hour	
31	18	4	Current Insulin dose (Units/hour) + 1 unit/hour	Plus optional 1 unit stat dose	2 hours	
32	18	5	Current Insulin dose (Units/hour)	Plus optional 1 unit stat dose	2 hours	
33	22	1	Current dose (Units/hour) x (current BSL + previous BSL)	Or maintain current dose	1 hour	
34	20	3	Current Insulin dose (Units/hour) + 2 units/hour	Plus optional 1 to 2 unit stat dose	1 hour	
35	20	4	Current Insulin dose (Units/hour) + 1 unit/hour	Plus optional 1 to 2 unit stat dose	1 hour	
36	33	4	Current Insulin dose (Units/hour) + 1 unit/hour	Plus 1 unit stat dose	2 hours	
37	20	5	Current Insulin dose (Units/hour)	Plus optional 1 to 2 unit stat dose	2 hours	
38	20	6	Current Insulin dose (Units/hour) + 2(current BSL + previous BSL) Units/hour	Plus optional 1 to 2 unit stat dose		
39	n/a	7	Current Insulin dose (Units/hour) * 0.5		1 hour	
40	25	7	Current Insulin dose (Units/hour) * 0.5	<b>ASK DOCTOR TO REVIEW</b>	30 and 60 mins	
41	18	5	Current Insulin dose (Units/hour)	Plus optional 1 unit stat dose	1 hour	
42	18	4	Current Insulin dose (Units/hour) + 1 unit/hour	Plus optional 1 unit stat dose	1 hour	
43	29	3	Current Insulin dose (Units/hour) + 2 units/hour	Plus 1 to 2 unit stat dose	1 hour	
44	29	4	Current Insulin dose (Units/hour) + 1 unit/hour	Plus 1 to 2 unit stat dose	1 hour	
45	29	6	Current Insulin dose (Units/hour) + 2(current BSL + previous BSL) Units/hour	Plus 1 to 2 unit stat dose	1 hour	
46	30	6	Current Insulin dose (Units/hour) + 2(current BSL + previous BSL) Units/hour	Plus 2 unit stat dose	1 hour	
47	20	5	Current Insulin dose (Units/hour)	Plus optional 1 to 2 unit stat dose	1 hour	not used
48	28	n/a		<b>NO INSULIN</b> Ensure background nutrition or glucose intake	30 and 60 mins	
49	31	n/a		2 units per hour plus optional 1 unit stat dose	1 hour	
50	32	n/a		4 units per hour plus optional 1 - 2 units stat dose	1 hour	
51	23	n/a		<b>STOP INSULIN FOR AT LEAST ONE HOUR</b> Ensure background nutrition or glucose intake Give bolus of 20 ml 50% glucose, recheck BSL. ASK DOCTOR TO REVIEW	30 and 60 mins	
52	24	n/a		<b>STOP INSULIN FOR AT LEAST ONE HOUR</b> Ensure background nutrition or glucose intake Give bolus of 10 ml 50% glucose, recheck BSL. ASK DOCTOR TO REVIEW	30 and 60 mins	
53	n/a	7	Current Insulin dose (Units/hour) * 0.5		1 hour	
54	34	5	Current Insulin dose (Units/hour)	<b>Can check in 2 hours if BG and insulin infusion rate and calorie intake stable, check in one hour if BG or insulin infusion rate or calorie intake changing</b>	1 hour or 2 hours	
55	10	n/a		<b>NO INSULIN</b>	2 hours	If last 2 BGLs in range 4.6 - 10.0 can recheck 4 hours after current reading was taken
56	35	n/a		<b>STOP INSULIN FOR AT LEAST ONE HOUR</b> Ensure background nutrition or glucose intake ASK DOCTOR TO REVIEW	30 and 60 minutes	
57	36	1	Current dose (Units/hour) x (current BSL + previous BSL)	<b>ASK DOCTOR TO REVIEW</b>	30 and 60 minutes	

Actions

Action code	Message_id	Calc_id	Calculation	Action	Message	Recheck	Recheck qualifier
1	1	n/a			<b>STOP INSULIN FOR AT LEAST ONE HOUR</b> Ensure background nutrition or glucose intake Give bolus of 20 ml 50% glucose, recheck BSL	30 and 60 mins	
2	2	n/a			<b>STOP INSULIN FOR AT LEAST ONE HOUR</b> Ensure background nutrition or glucose intake Give bolus of 10 ml 50% glucose, recheck BSL	30 and 60 mins	
3	3	n/a			<b>STOP INSULIN FOR AT LEAST ONE HOUR</b> Ensure background nutrition or glucose intake	1 hour	
4	3	n/a			<b>STOP INSULIN FOR AT LEAST ONE HOUR</b> Ensure background nutrition or glucose intake	30 and 60 mins	
5	4	n/a			<b>REDUCE DOSE TO 0.5 UNIT/HOUR</b> Ensure background nutrition or glucose intake	30 and 60 mins	
6	5	n/a			<b>REDUCE DOSE TO 1.0 UNIT/HOUR</b> Ensure background nutrition or glucose intake	30 and 60 mins	
7	5	n/a			<b>REDUCE DOSE TO 1.0 UNIT/HOUR</b> Ensure background nutrition or glucose intake	1 hour	
8	6	n/a			<b>REDUCE DOSE TO 0.5 UNIT/HOUR</b> Ensure background nutrition or glucose intake Give bolus of 10ml 50% glucose, recheck BSL	30 and 60 mins	
9	7	n/a			<b>REDUCE DOSE TO 1.0 UNIT/HOUR</b> Ensure background nutrition or glucose intake Give bolus of 10ml 50% glucose, recheck BSL	30 and 60 mins	
10	n/a	1	Current dose (Units/hour) x (current BSL + previous BSL)			1 hour	
11	n/a	1	Current dose (Units/hour) x (current BSL + previous BSL)				
					<b>Check in 2 hours if BG and insulin infusion rate and calorie intake stable, check in one hour if BG or insulin infusion rate or calorie intake changing</b>	1 hour or 2 hours	recheck after 1 hour if you are concerned
12	n/a	2	Current dose (Units/hour) x (current BSL + previous BSL) + 0.5 unit/hour			1 hour	
13	n/a	2	Current dose (Units/hour) x (current BSL + previous BSL) + 0.5 unit/hour			2 hours	recheck after 1 hour if you are concerned
14	n/a	3	Current Insulin dose (Units/hour) + 2 units/hour			1 hour	
15	n/a	4	Current Insulin dose (Units/hour) + 1 unit/hour			1 hour	
16	n/a	4	Current Insulin dose (Units/hour) + 1 unit/hour			2 hours	recheck after 1 hour if you are concerned
17	n/a	5	Current Insulin dose (Units/hour)			1 hour	
17	34	5	Current Insulin dose (Units/hour)				
18	n/a	5	Current Insulin dose (Units/hour)			2 hours	recheck after 1 hour if you are concerned
19	n/a	6	Current Insulin dose (Units/hour) + 2(current BSL + previous BSL) Units/hour			1 hour	
20	8	n/a			<b>NO INSULIN</b> Ensure background nutrition or glucose intake Give bolus of 20 ml 50% glucose, recheck BSL	30 and 60 mins	
21	9	n/a			<b>NO INSULIN</b> Ensure background nutrition or glucose intake Give bolus of 10 ml 50% glucose, recheck BSL	30 and 60 mins	
22	10	n/a			<b>NO INSULIN</b>	1 hour	
23	10	n/a			<b>NO INSULIN</b>	2 hours	
24	10	n/a			<b>NO INSULIN</b>	4 hours	If last 2 BGLs in range 82 - 180 can recheck 4 hours after current reading was taken
25	11	n/a			<b>1 UNIT PER HOUR</b>	1 hour	
26	12	n/a			<b>2 UNIT PER HOUR</b>	1 hour	
27	13	n/a			<b>3 UNIT PER HOUR</b>	1 hour	
28	14	n/a			<b>4 UNIT PER HOUR</b>	1 hour	
29	15	n/a			<b>STOP INSULIN FOR AT LEAST ONE HOUR</b>	1 hour	
30	16	1	Current dose (Units/hour) x (current BSL + previous BSL)		<b>Ensure background nutrition or glucose intake</b>	1 hour	
31	18	4	Current Insulin dose (Units/hour) + 1 unit/hour		Plus optional 1 unit stat dose	2 hours	
32	18	5	Current Insulin dose (Units/hour)		Plus optional 1 unit stat dose	2 hours	
33	22	1	Current dose (Units/hour) x (current BSL + previous BSL)		Or maintain current dose	1 hour	
34	20	3	Current Insulin dose (Units/hour) + 2 units/hour		Plus optional 1 to 2 unit stat dose	1 hour	
35	20	4	Current Insulin dose (Units/hour) + 1 unit/hour		Plus optional 1 to 2 unit stat dose	1 hour	
36	33	4	Current Insulin dose (Units/hour) + 1 unit/hour		Plus 1 unit stat dose	2 hours	
37	20	5	Current Insulin dose (Units/hour)		Plus optional 1 to 2 unit stat dose	2 hours	
38	20	6	Current Insulin dose (Units/hour) + 2(current BSL + previous BSL) Units/hour		Plus optional 1 to 2 unit stat dose		
39	n/a	7	Current Insulin dose (Units/hour) * 0.5			1 hour	
40	25	7	Current Insulin dose (Units/hour) * 0.5			30 and 60 mins	
41	18	5	Current Insulin dose (Units/hour)		<b>ASK DOCTOR TO REVIEW</b>	30 and 60 mins	
41	18	5	Current Insulin dose (Units/hour)		Plus optional 1 unit stat dose	1 hour	
42	18	4	Current Insulin dose (Units/hour) + 1 unit/hour		Plus optional 1 unit stat dose	1 hour	
43	29	3	Current Insulin dose (Units/hour) + 2 units/hour		Plus 1 to 2 unit stat dose	1 hour	
44	29	4	Current Insulin dose (Units/hour) + 1 unit/hour		Plus 1 to 2 unit stat dose	1 hour	
45	29	6	Current Insulin dose (Units/hour) + 2(current BSL + previous BSL) Units/hour		Plus 1 to 2 unit stat dose	1 hour	
46	30	6	Current Insulin dose (Units/hour) + 2(current BSL + previous BSL) Units/hour		Plus 2 unit stat dose	1 hour	
47	20	5	Current Insulin dose (Units/hour)		Plus optional 1 to 2 unit stat dose	1 hour	not used
48	28	n/a			<b>NO INSULIN</b>	1 hour	
49	31	n/a			<b>Ensure background nutrition or glucose intake</b>	30 and 60 mins	
49	31	n/a			2 units per hour plus optional 1 unit stat dose	1 hour	
50	32	n/a			4 units per hour plus optional 1 - 2 units stat dose	1 hour	
51	23	n/a			<b>STOP INSULIN FOR AT LEAST ONE HOUR</b> Ensure background nutrition or glucose intake Give bolus of 20 ml 50% glucose, recheck BSL. ASK DOCTOR TO REVIEW	30 and 60 mins	
52	24	n/a			<b>STOP INSULIN FOR AT LEAST ONE HOUR</b> Ensure background nutrition or glucose intake Give bolus of 10 ml 50% glucose, recheck BSL. ASK DOCTOR TO REVIEW	30 and 60 mins	
53	n/a	7	Current Insulin dose (Units/hour) * 0.5			30 and 60 mins	
54	34	5	Current Insulin dose (Units/hour)			1 hour	
54	34	5	Current Insulin dose (Units/hour)		<b>Can check in 2 hours if BG and insulin infusion rate and calorie intake stable, check in one hour if BG or insulin infusion rate or calorie intake changing</b>	1 hour or 2 hours	
56	35	n/a			<b>STOP INSULIN FOR AT LEAST ONE HOUR</b> Ensure background nutrition or glucose intake	30 and 60 minutes	
57	36	1	Current dose (Units/hour) x (current BSL + previous BSL)		<b>ASK DOCTOR TO REVIEW</b> <b>ASK DOCTOR TO REVIEW</b>	30 and 60 minutes	

Message_id	Message
1	<b>STOP INSULIN FOR AT LEAST ONE HOUR</b> Ensure background nutrition or glucose intake Give bolus of 20 ml 50% glucose, recheck BSL. <b>ASK DOCTOR TO REVIEW</b>
2	<b>STOP INSULIN FOR AT LEAST ONE HOUR</b> Ensure background nutrition or glucose intake Give bolus of 10 ml 50% glucose, recheck BSL. <b>ASK DOCTOR TO REVIEW</b>
3	<b>STOP INSULIN FOR AT LEAST ONE HOUR</b> Ensure background nutrition or glucose intake
4	<b>REDUCE DOSE TO 0.5 UNIT/HOUR</b> Ensure background nutrition or glucose intake
5	<b>REDUCE DOSE TO 1.0 UNIT/HOUR</b> Ensure background nutrition or glucose intake
6	<b>REDUCE DOSE TO 0.5 UNIT/HOUR</b> Ensure background nutrition or glucose intake Give bolus of 10ml 50% glucose, recheck BSL. <b>ASK DOCTOR TO REVIEW</b>
7	<b>REDUCE DOSE TO 1.0 UNIT/HOUR</b> Ensure background nutrition or glucose intake Give bolus of 10ml 50% glucose, recheck BSL. <b>ASK DOCTOR TO REVIEW</b>
8	<b>NO INSULIN</b> Ensure background nutrition or glucose intake Give bolus of 20 ml 50% glucose, recheck BSL. <b>ASK DOCTOR TO REVIEW</b>
9	<b>NO INSULIN</b> Ensure background nutrition or glucose intake Give bolus of 10 ml 50% glucose, recheck BSL. <b>ASK DOCTOR TO REVIEW</b>
10	<b>NO INSULIN</b>
11	<b>1 UNIT PER HOUR</b>
12	<b>2 UNIT PER HOUR</b>
13	<b>3 UNIT PER HOUR</b>
14	<b>4 UNIT PER HOUR</b>
15	<b>STOP INSULIN FOR AT LEAST ONE HOUR</b>
16	Ensure background nutrition or glucose intake
17	Plus 1 or 2 units per hour
18	Plus optional 1 unit stat dose
19	Plus optional 2 unit stat dose
20	Plus optional 1 to 2 unit stat dose
21	Plus 1 or 2 units per hour plus 1 - 2 units stat dose
22	Or maintain current dose
23	<b>STOP INSULIN FOR AT LEAST ONE HOUR</b> Ensure background nutrition or glucose intake Give bolus of 20 ml 50% glucose, recheck BSL. <b>ASK DOCTOR TO REVIEW</b>
24	<b>STOP INSULIN FOR AT LEAST ONE HOUR</b> Ensure background nutrition or glucose intake Give bolus of 10 ml 50% glucose, recheck BSL. <b>ASK DOCTOR TO REVIEW</b>
25	<b>ASK DOCTOR TO REVIEW</b>
26	2 units per hour plus optional 1 unit stat dose
27	4 units per hour plus optional 1 - 2 unit stat dose
28	<b>NO INSULIN</b> Ensure background nutrition or glucose intake
29	Plus 1 to 2 unit stat dose
30	Plus 2 unit stat dose
31	2 units per hour plus optional 1 unit stat dose
32	4 units per hour plus optional 1 - 2 units stat dose
33	Plus 1 unit stat dose
34	Can check in 2 hours if BG and insulin infusion rate and calorie intake stable
35	<b>STOP INSULIN FOR AT LEAST ONE HOUR</b> Ensure background nutrition or glucose intake <b>ASK DOCTOR TO REVIEW</b>
36	<b>ASK DOCTOR TO REVIEW</b>

<b>Calc_id</b>	<b>Calculation</b>
1	Current dose (Units/hour) x (current BSL ÷ previous BSL)
2	Current dose (Units/hour) x (current BSL ÷ previous BSL) + 0.5 unit/hour
3	Current Insulin dose (Units/hour) + 2 units/hour
4	Current Insulin dose (Units/hour) + 1 unit/hour
5	Current Insulin dose (Units/hour)
6	Current Insulin dose (Units/hour) + 2(current BSL ÷ previous BSL) Units/hour
7	Current Insulin dose (Units/hour) * 0.5